

Straight from

**BRIGHTON
FRINGE.**
FROM
28 MAY 2021



“like a 21st century Flanders and Swann”
The Reviews Hub



Our Star Theatre Company Presents



SHERLOCK'S EXCELLENT ADVENTURE

A New Comedy by James Barry
Inspired by Sir Arthur Conan Doyle's 'Sherlock Holmes'



TOUR PACK

CONTENTS

PAGE 1 - PLOT SUMMARY
& CHARACTERS

PAGE 2 & 3 - REVIEWS

PAGE 4 - TECHNICAL
SPECIFICATION

PAGE 5 - MORE ABOUT OUR
STAR & CONTACT



PLOT SUMMARY

Follow Sherlock Holmes and his incomparable sidekick Dr John Watson on this riveting, hitherto unpublished case ...

Damsel in distress Lucy Matravers engages Arthur Conan Doyle's famous sleuth Holmes and his partner Watson to resolve a dispute over a family will.

Little do they know that this small case brings Holmes straight into the clutches of his arch enemy, James Moriarty!

This hilarious spoof is taken on by four actors, minimal furnishings and a ton of jolly-good fun!

CHARACTERS

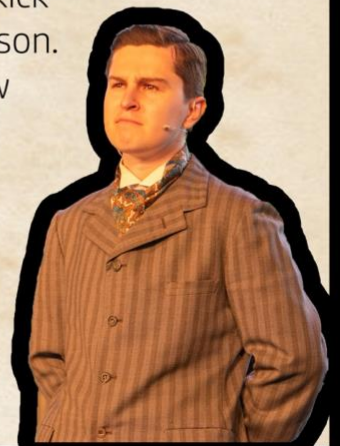
SHERLOCK HOLMES



Arthur Conan Doyle's famous sleuth, Sherlock Holmes. Holmes is a world-renowned private detective and will not stop until the mystery is solved! The only thing that may hold him back is the interference from his arch-enemy James Moriarty...

DR WATSON

Sherlock's faithful sidekick and biographer, Dr Watson. Dr Watson would follow his beloved Sherlock anywhere without fail, even into their most-dangerous case yet!



PROFESSOR MORIARTY



Professor James Moriarty, Holmes' most hated rival. An evil genius without equal. Moriarty plots to inherit the Matravers family estate and scupper his rivals plans in one fell swoop!

LUCY MATRAVERS

Lucy Matravers turns up at 221B Baker Street with a seemingly simple case for the detective duo. But this small case plunges the pair into a brand-new adventure, full of thrills, excitement, but most of all, danger!



REVIEWS

THE REVIEWS HUB



BRIGHTON
FRINGE.
FROM
28 MAY 2021

Dr Watson enters the stage to declare that the story we are about to see is an unpublished case involving his closest friend, Mr Sherlock Holmes. From here the audience are taken on a wacky farcical adventure, which has the venue laughing and delighting in moments of silliness.

Mr Holmes' new client is the swoonsome Miss Lucy Matravers; a damsel in distress who immediately catches the appreciative eye of Dr Watson. Miss Matravers mother has sadly died and she fears that she will be disinherited by her evil uncle, the villainous rogue Professor Moriarty. Will Holmes be able to locate the will that ensures Miss Matravers fortune and will John Watson be able to woo the girl? The crowd is about to find out. Parodies of Sherlock Holmes have mixed results. They can soar like a golden eagle, such as the wonderful film *Without a Clue*, starring Michael Caine and Ben Kingsley, or crash on hard ice like "Eddie the Eagle", such as the heinous Will Ferrell comedy project, *Holmes and Watson*, co-starring John C Reilly. Creatives tread a fine line with such a well loved fictional character. Thankfully *Sherlock's Excellent Adventure*, developed and performed by the Herefordshire based, Our Star Theatre Company, is a piece that is suitably silly, often hitting the mark and solidly played by the company.

Ben Mowbray, as Holmes, plays the role with a joyful spring in his step, as does Daniel Davis as Watson. They often break the fourth wall, with audience participation and narrative asides and have a good and easy rapport with each other. Breaking into song now and again, like a 21st century *Flanders and Swann*, the crowd warm to their performance and laugh freely at parts of the show.

Ava Weetman, as Miss Matravers, adds to the show well and has a goofball zaniness about her.

The fourth actor completing the company, Rhys Harris-Clarke, plays an interesting grotesque version of Mrs Hudson, the housekeeper; in one scene pretending to be drunk to glorious effect. As Professor Moriarty he channels the spirit of Broadway star Nathan Lane and gleefully "hams it up".

Lovely flourishes from each performer raise laughter; Holmes using a magnifying glass without the glass in and his use of a bubble pipe are nice touches. The scene changes are very funny, especially when they change to and from a graveyard location.

All in all the play is well performed and emanates both an equal measure of joy and daftness, which leaves a smile on the faces of the gathering as the show comes to an end.

REVIEWS

CHOICE RADIO WORCESTER

A large orchard in the depths of the Herefordshire countryside may not be the obvious location in which to perform plays in the glorious outdoors but Dragon Orchard at Putley, near Ledbury, fits the bill perfectly. The curved wall stage provides the ideal simple backdrop to Our Star Theatre Company's latest production, Sherlock's Excellent Adventure, whilst a large covered structure provides shelter for the audience in case that tiny chance of a shower in a British summer comes to pass... And, as you might expect, the apple juice provided by those trees is really delicious!

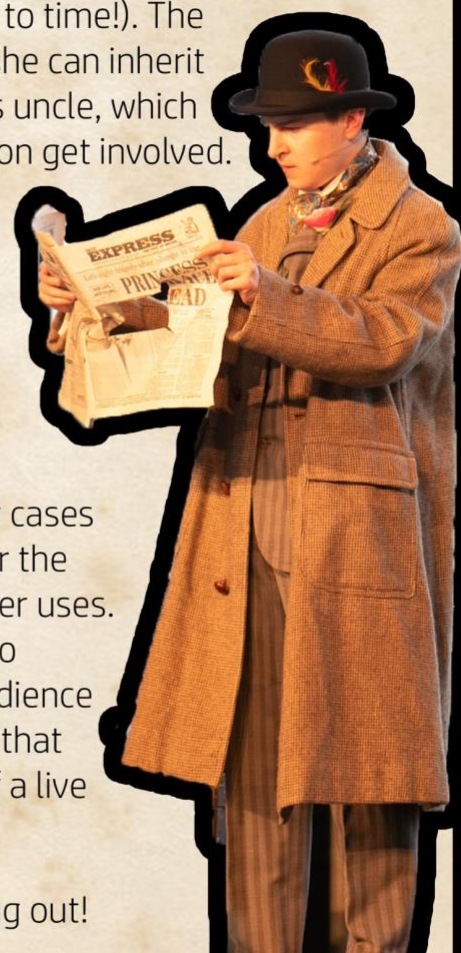
Having already premiered at the Brighton Fringe recently, what of the show itself?

Ben Mowbray has always striven to put on interesting and enjoyable shows and this is no exception. And, as usual, he has selected a talented bunch of young actors to work with, familiar faces if you have been to previous productions or attended the shows performed by Malvern Theatres Young Company. With Ben in the role of the man himself, Daniel Davis plays Dr Watson, Rhys Harris-Clarke doubles up as Moriarty and Mrs Hudson and Ava Wheatman is Lucy Matravers, around whom this Excellent Adventure revolves.

Daniel is the story's narrator, breaking the "fourth wall" by talking directly to the audience (or gargoyles, as Moriarty called us, though that presumably did not include the dog who wandered around the audience from time to time!). The plot entails finding the will of Lucy's deceased mother so that she can inherit their country pile. Unfortunately, Moriarty appears to be Lucy's uncle, which kind of complicates matters, especially once Holmes and Watson get involved. There is also the mystery surrounding Holmes's housekeeper Mrs Hudson and her twin sister, which play on one of Rhys's strengths, portraying both roles with the associated quick costume changes and accents, all faultlessly carried out. Meanwhile, Watson has the hots for Lucy - can that possibly end well?

With the usual minimal set - basically a couple of large packing cases and some tombstones - a lot is left to the imagination, whether the form a railway carriage, a toilet compartment or a range of other uses. And the script, by James Barry is very funny enabling the cast to present a laugh out loud comedy, with echoes of panto and audience involvement, at a time when we could all do with one. The fact that they are clearly enjoying this opportunity to perform in front of a live audience is a bonus.

An Excellent Adventure giving an excellent afternoon or evening out!



TECHNICAL SPECIFICATIONS

STAGE & SET

Minimum stage size 3m x 2m. Wings preferable - can work with our without crossover.

We are very flexible, so can make most spaces work, and are happy with any audience layout at the venue's discretion.

Set consists of 2 travel trunks and a crate. These get moved throughout the show. 3 tombstones and various small props come on and off - kept in wings.

SHOW LENGTH

Show originally in Two Acts, though can be presented as One Act straight through.

One Act: 1h 10m straight through.

Two Act: 45m Act 1
Interval
45m Act 2

Total Playing Time: 1h 30m (excl. interval)

COMPANY

Performers: 4
1 female, 3 male

Technician: 1
Lighting & Sound Operator

Dressing Rooms: Happy with 1+ room(s)

GET-IN & GET-OUT

Get-In: Minimum 4 hours before house opens

Get-Out: 30m after Auditorium Cleared, including dressing rooms

LIGHTING

Very flexible. Happy to work with venue's standard rig.

Minimum set-up: General Wash.

Ideal set-up: Warm Wash, Cold/Blue Wash, Green Wash, low intensity scene transition state, DSC spotlight.

SOUND

Sound Effects operated from company's laptop. All we need is to plug in to venue's mixing desk (3.55mm jack for laptop).

Minimum set-up: L/R stereo PA System

Ideal set-up: L/R stereo PA System in auditorium, stage L/R speakers for foldback and position plotted SFX

MORE ABOUT OUR STAR

Find out more about **Our Star Theatre Company** and our latest shows and events by visiting:

Website: ourstartheatrecompany.com

Facebook: facebook.com/ourstartheatrecompany

Twitter: [@ourstartheatre](https://twitter.com/ourstartheatre)

Instagram: [@ourstartheatre](https://www.instagram.com/ourstartheatre)

CONTACT

Sherlock's Excellent Adventure is available for touring from April - August 2022 and throughout 2023.

If you or your venue are interested in finding out more about our show, or would like to add us to your upcoming programme of events, please do not hesitate to get in touch - we would love to hear from you!

Please see all relevant contact details below:

Ben Mowbray
Company Director
ourstartheatre@outlook.com
07742 878329

Our Star Theatre Company
Theatre Homegrown in Herefordshire

